



# RUNNING A SAFER, SMARTER, MORE PRODUCTIVE LOCAL GOVERNMENT FLEET

Local councils often operate large vehicle and asset fleets, using a pooled vehicle system on a daily basis. We have been working with a number of different local councils, providing the insights we have gathered from years in the industry to help resolve some of the key challenges they face.

## The 3 common challenges across the sector

Fleet Managers and other divisions within the Local Government sector consistently identify the following 3 attributes as imperative to their vehicle operations and which remain a regular challenge:

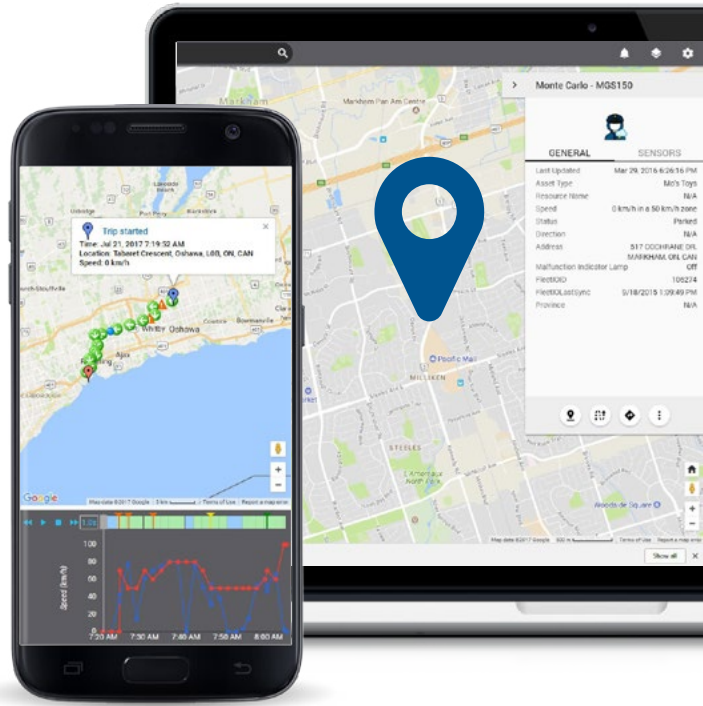
**1 Accountability and productivity of vehicles and assets:** Having a way to measure asset utilisation (e.g. street sweepers, lawn mowers) and improve the productivity of maintenance works.

**2 A centralised platform for service history:** Fleet Managers staying on top of vehicle health when dealing with a large fleet. Councils are looking for an automated, paperless system that can achieve this seamlessly.

**3 Staying on top of staff safety while out in the field:** Ensuring all work health and safety regulations are met whilst staff is operating across a pooled vehicle system and continuously moves to different locations.

# GAIN A COMPETITIVE ADVANTAGE WITH FLEET COMPLETE'S LOCAL GOVERNMENT IVMS SOLUTION

Fleet Complete is a leading global provider of mission-critical fleet, asset, and mobile workforce management solutions. We have an enviable track record of assisting Local Councils in solving the challenges faced with safety, productivity, and vehicle health.



## Suitable for all types of vehicles



### Improved accountability of asset engagement

Report on how and when assets are being utilised, such as differentiating between the vehicle simply being driven and when the street sweeper decks are engaged.



### Better understanding of individual performance

A Driver ID system enables you to monitor individual driver behaviour and productivity data in a pooled vehicle environment.



### Better route planning

Gain a better understanding of daily tasks and channel these through the Garmin device for optimum route selection. For ad hoc trips throughout the day, identify the closest vehicle and send assignments to your drivers in real-time.



### Comply with work, health & safety regulations

The Work Health and Safety Act (2011) requires fleets to have a WH&S policy in place. Staying on top of driver behaviour, such as speeding and harsh driving (i.e. braking, cornering), can help improve the safety conditions of your staff.



### Increased productivity

Using 'Geofenced' zone tracking, we have helped identify how long vehicles spend in specific zones in order to establish key areas of improvements and lower overtime claims.



### Optimum fleet health

Our platform enables you to proactively stay on top of any vehicle issues, while automated vehicle and asset service reminders allow you to proactively manage your fleet's welfare.

**Contact your regional Fleet Complete specialist to schedule a one-on-one personalised demo or visit [fleetcomplete.com.au](http://fleetcomplete.com.au) to learn more.**