

STREAMLINING OPERATIONS WITHIN THE TRADE SERVICE INDUSTRY THROUGH EFFECTIVE FLEET MANAGEMENT

The trade services industry traditionally operate a number of different vehicles that move across multiple job sites throughout any day. Many of these businesses have little to no visibility of their fleets day to day operations. We have been working with a number of businesses from this industry to help resolve some of the challenges they face around their staff and vehicles.



The 3 common challenges across the sector

Business owners of trade service companies consistently identify the following 3 challenges as imperative to their business:

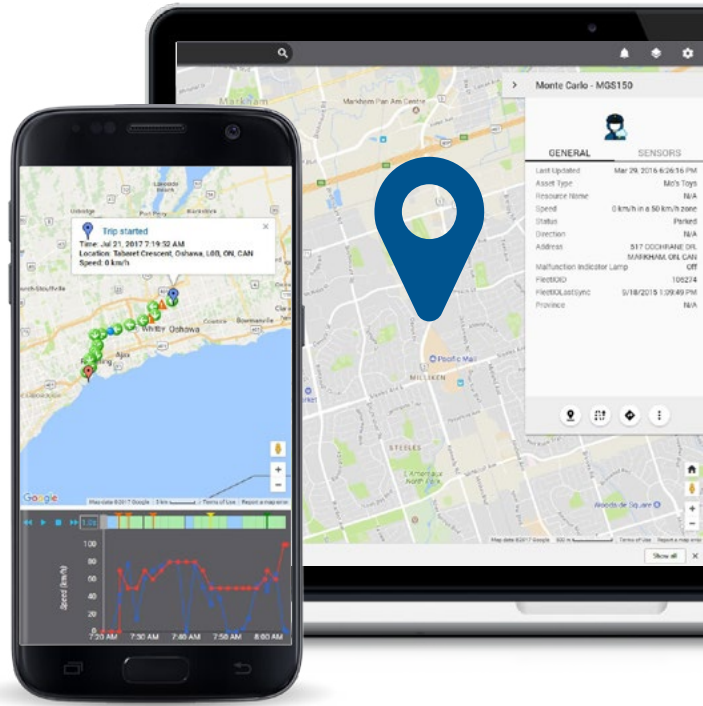
1 A streamlined way to complete admin work: Providing accurate billing information and staying on top of staff wages is important admin work that needs to be stayed on top of. This is often a task that can become labour intensive for someone who is already time-tied.

2 Competition is high and customer service is key: Any business that provides a service to an end customer must ensure their service is at a high level. The key challenge is having a clear understanding of all of your operations.

3 Keeping costs down: Running a fleet of vehicles can become costly, especially for a small business. The key concern is reducing unneeded wear and tear as well as fuel wastage and redundant travel.

GAIN A COMPETITIVE ADVANTAGE WITH FLEET COMPLETE'S TRADE SERVICES IVMS SOLUTION

Fleet Complete is a leading global provider of mission-critical fleet, asset, and mobile workforce management solutions. We have an enviable track record of assisting businesses who use vehicles as key business tools to solve the challenges they may face when it comes to productivity and reducing costs.



Suitable for all types of vehicles



Automate your billing

Using our trip history reports, you can run a daily automated report to determine how long a vehicle was at a job to provide accurate and automated billing to your customers.



Reduce vehicle ownership costs

The system provides a centralised platform to manage service reminders and monitor adverse driver behaviour, which can potentially reduce wear and tear and fuel consumption, and lead to optimum maintenance levels.



Improved customer service

The ability to seamlessly assess where vehicles are at all times will allow you to communicate more accurate times for jobs to your customers.



Improved accountability

Verify your time sheets and confirm that the time taken to complete a job is accurate, while cutting out after-hours usage.



Improved productivity

Gain a transparent view of your day-to-day operations and identify inefficiencies that can contribute to not reaching true production capacity, e.g. staff downtime in between jobs.



Optimum fleet health

Our platform enables you to proactively stay on top of any vehicle issues, while automated vehicle and asset service reminders allow you to proactively manage your fleet's welfare.

Contact your regional Fleet Complete specialist to schedule a one-on-one personalised demo or visit fleetcomplete.com.au to learn more.